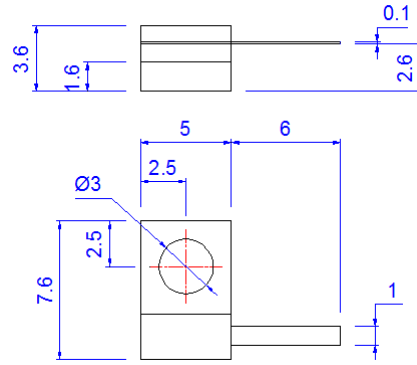


Model SHX10-50B4SF111(SHX10-50TVR) DC-4GHz 10Watts



High power resistors are used as balance resistors on all other or as absorption edge in hybrid and coupler. They feature broadband frequency, low VSWR, excellent capacity in anti-pulse and anti-burnout etc.

MECHANICAL SPECIFICATIONS	
Cover Plate	Al ₂ O ₃
Substrate	BeO
Base Plate	Brass Nickel Plated
Lead Material	Silver
Dimensions	5×12.7×3.6mm

RoHS Compliant: Yes

ELECTRICAL SPECIFICATIONS

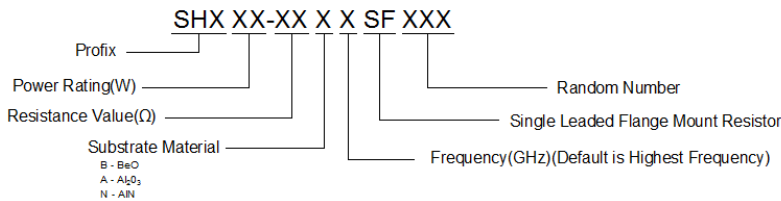
Model Number	Frequency Range(GHz)	VSWR
SHX10-50B4SF111(SHX10-50TVR)	DC-4	1.30

NOMINAL IMPEDANCE: 50Ω

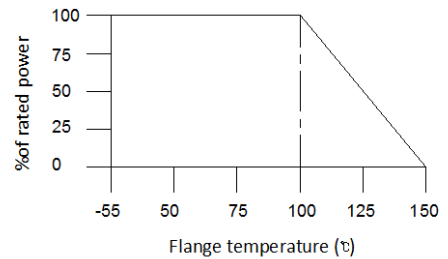
AVERAGE POWER: 10W

OPERATING TEMPERATURE: -55°C~+150°C

ORDER INFORMATION:



POWER CURVE:



Note:

1. Resistance tolerance: standard tolerance ±5%, ±2%.
2. Resistance range: 0.5-20000Ω, standard 50-100Ω.
3. Use additional lumped element and matched line to get lower VSWR.
4. Operation board and lead can be made according to customer's demand.
5. Custom designed for special demand.
6. Dimensions Tolerance ±3%