

## Model SHX437B 10MHz-18GHz +20~-45dBm



### FEATURES

- ◇ Power Measure Range 65 dB
- ◇ Resolving power 0.01 dB
- ◇ Automatic zeroing calibration & measuring range switch
- ◇ 10 Store & Transfer Memorizer
- ◇ Frequency Compensation of any Measuring Range
- ◇ Comfortable LCD display

SHX437B, one kind of programming CW power meter, can measure frequency range from 10 MHz to 18.0 GHz with power levels 0.1uW~100mW. The high performance and accuracy can fully meet kinds of measure requirement in RF & microwave field such as communication companies, educational institutions and lab oratories etc.

With latest advance digital signal processing technology, manual command input method and comfortable LCD display, SHX437B is very simple and easy for use. It also can be calibrated before power measurement with inner 50MHz high stable power calibration source.

### SPECIFICATIONS

<b>Frequency Range:</b>	10MHz~18GHz (See power sensor)
<b>Power Range:</b>	+20dBm~-45dBm (See power sensor)
<b>VSWR:</b>	≤1.28
<b>Readout Accuracy:</b>	DATA ± 8%
<b>Display Resolution:</b>	±0.01dB
<b>Impedance:</b>	50Ω
<b>Power Reference:</b>	50 MHz; 1.00 mW ±1.5%; VSWR of Source: 1.08
<b>Display:</b>	W, dBm
<b>Line Voltage Range:</b>	AC 110V~220V ±10% 50Hz 10W
<b>Operation Temp:</b>	0°C~40°C
<b>Dimensions:</b>	250*344*117mm
<b>Weight:</b>	3.5Kg

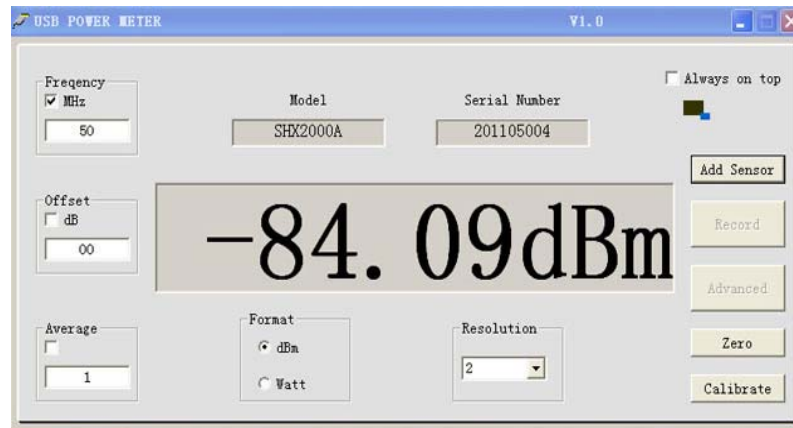
## Model SHX2000A 0.01-18GHz 100 mWatts

SHX2000A coming with USB interface is the pocket average CW signals power meter .It can be quickly set up and perform measurements without the use of power meter host. You only need to access the USB sensor with PC computer, with the help of software which control the sensors, the signals can be tested.



### SPECIFICATIONS:

<b>FREQUENCY RANGE:</b>	10MHz~18GHz
<b>POWER RANGE:</b>	1 μ W-100mW(-30~+20dBm)
<b>DISPLAY RESOLUTION:</b>	1dB, 0.1dB, 0.01dB, 0.001dB
<b>DISPLAY MODE:</b>	W、 dBm
<b>VSRW:</b>	1.1~1.28
<b>INPUT CONNECTOR:</b>	N(Male)
<b>CONTROL MODE:</b>	USB
<b>DIMENSIONS:</b>	155×39×30(without line)
<b>WEIGHT:</b>	250g



Display Screen

### ELECTRICAL SPECIFICATIONS:

Parameters	Min	Typical	Max	Unit
Dynamic Range	-30		+20	dBm
Power Measurement Uncertainty		±0.2	±0.8	dB
Measurement resolution	0.001		1	dB
Average number of range	1		1000	
Measuring speed		500		mSec

### Notes:

1. Dimensions Tolerance ±2%

## Model SHX2462A 0.01-18GHz



SHX-2462A handy power meter is for field, power supply adopts 5V Lithium battery or external power adapter, main feature is light, large measuring range, easy operation. SHX-2462A handy power meter is based on digital signal new type of detector diode meter. It has auto calibration and zero function. It has wide frequency range, large power range, high speed and high definition. It use LCD display to make power consume low to extend the work time.

### MECHANICAL SPECIFICATIONS:

Connectors	Male Pin	Housing	Temp Range	Dimensions	Weight
Brass Nickel Plated	Brass Gold Plated	Aluminum	-40°C~+65°C	182×66×40mm	590g

RoHS Compliant: Yes

### ELECTRICAL SPECIFICATIONS:

Model Number	Frequency Range(GHz)	VSWR	Display Accuracy	Power Accuracy	Power Range
SHX2462A	0.01~18GHz	$\leq 1.25(0.01\sim 0.03\text{GHz})$ $\leq 1.20(0.03\sim 6\text{GHz})$ $\leq 1.28(6\sim 18\text{GHz})$	$\pm 0.01 \pm 2\text{data}$	$\pm 8\%$	-30~+20 dBm

Note: expanding the test range with the attenuator available

**NOMINAL IMPEDANCE:** 50Ω

**SUPPLY POWER:** USB 5V

**CONNECTOR TYPE:** N(J)

**Notes:** Dimensions Tolerance  $\pm 2\%$

## Model Number SHX2462B 0.01-6GHz 1μW-100mW



SHX-2462B pulse handy power meter is for field, main feature is light, large measuring range, easy operation. Through the USB interface power supply. SHX-2462B handy power meter is based on digital signal new type of detector diode meter. It has auto calibration and zero function. It use LCD display to make power consume low to extend the work time. It can be used to be new and efficient solution for test the RF and microwave communication system: used for base station installation and maintenance, wireless components production test, wireless component development.

### SPECIFICATIONS:

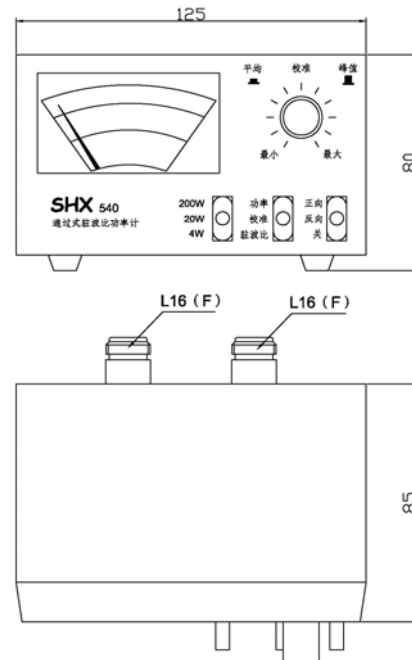
<b>Frequency Range:</b>	10MHz~6GHz
<b>VSWR:</b>	10MHz~30MHz ≤1.25 30MHz~6GHz ≤1.20
<b>Operating Temp.Range:</b>	-10℃~40℃
<b>Storage Temp.Range:</b>	-40℃~70℃
<b>Power Accuracy:</b>	±8%
<b>Impedance:</b>	50Ω
<b>Display Mode:</b>	W、dBm
<b>Power Range:</b>	1μW-100mW(-30 ~ +20dBm)
<b>Weight:</b>	230g
<b>Dimensions:</b>	143×44×27mm(without buttons & USB line)
<b>Connector Type:</b>	N(male)

### ELECTRICAL SPECIFICATIONS

Parameters	Min	Typical	Max	Unit
Dynamic Range	-30		+20	dBm
Power Measurement Uncertainty		±0.2	±0.4	dB
Measurement resolution		0.1		dB

**Notes:** Dimensions Tolerance ±2%

## Model SHX540 140-520MHz 200 Watts



SHX540 VSRW/Power meter is a portable, multi-function, passing VSWR and power measuring instruments, the measurable frequency range from 140MHz to 520MHz, continuous power from 0-220W, the modulation wave peak power. The transmitter and antenna equipment access, real-time measurement, monitoring working conditions and the transmitter antenna input power, reflected power, VSWR and other parameters.

SHX540 features high accuracy, low insertion loss, small size and can meet the demand of communications and broadcasting system.

### SPECIFICATIONS:

<b>FREQUENCY RANGE:</b>	140~520MHz
<b>POWER RANGE:</b>	0~220W
<b>POWER STALLS:</b>	4 W 、 20W、 200W
<b>POWER INDICATION ERROR:</b>	±10%(full stalls)
<b>VSRW TEST MIN POWER:</b>	4W
<b>VSRW TEST RANGE:</b>	1.0~∞
<b>INPUT/OUTPUT IMPEDANCE:</b>	50 Ω
<b>INPUT/OUTPUT CONNECTOR:</b>	L16-50KF
<b>INSERTION LOSS:</b>	<0.1dB (14~250MHz) <0.25dB (400~470MHz) <0.3dB (520MHz)
<b>DIMENSIONS:</b>	125×80×85mm
<b>WEIGHT:</b>	600g

### Notes:

1. Dimensions Tolerance ±2%